

# Capability Statement

## Introduction

At Betomi Construction, we deliver reliable, high-quality construction solutions built on experience, integrity, and performance. With a proven track record across commercial and residential projects, we bring technical expertise, disciplined project management, and a safety-first culture to every job site.

Our team of skilled professionals is committed to completing projects on time and within budget while exceeding client expectations. We pride ourselves on clear communication, strong stakeholder collaboration, and meticulous attention to detail from pre-construction planning through final delivery.

By combining innovative construction practices with industry best standards, we consistently provide durable, cost-effective, and sustainable building solutions.



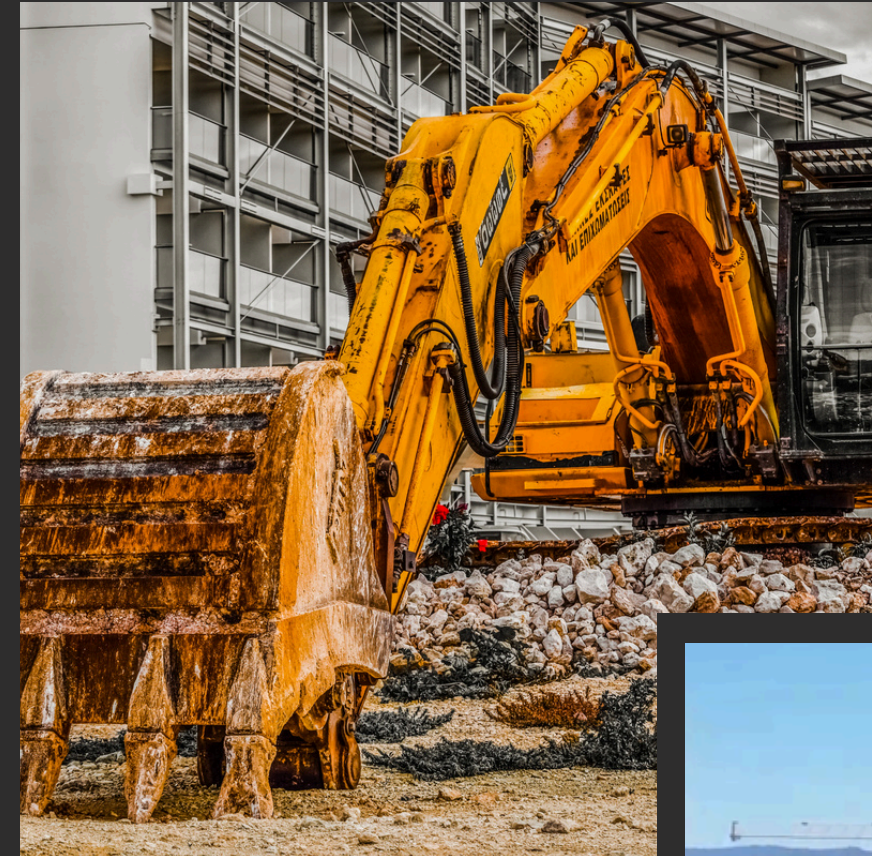
# BETOMi Company Inception

The group was originally founded in 2015 by Michael Lance, a Master Builder since 2012, with a clear objective — to establish a disciplined, governance-led construction business capable of delivering complex commercial and residential projects with confidence. Drawing on extensive experience in buildability, programme management, and structural coordination, Michael set the technical and operational standards that continue to define the company's delivery model.

Initially established under Travcon Pty Ltd and trading as Build4U Quality Constructions, the business focused on commercial construction, hospitality developments, and multi-residential projects across the Sunshine Coast and Gold Coast. From inception, the group prioritised structured systems, transparent reporting, and disciplined project controls to ensure reliable delivery outcomes.

In 2016, Rebecca Lance joined the business to provide financial and operational oversight. Under Rebecca's guidance, processes and systems were implemented, including compliance systems and strengthened administration processes, transitioning the group into the professionally governed construction platform of present.

With strong leadership and embedded governance frameworks in place, the company's growth has been deliberate and capability-driven. The group has progressively expanded into increasingly complex multi-storey and basement-intensive residential developments, demonstrating particular strength in coastal environments presented in South East Queensland.



**90+**  
Happy Clients

**10+ years**  
of operation



# BETOMI

# Our Success Story

## **Structured Delivery (2017–2019)**

The group's operational maturity increased in 2017 with the introduction of Tom Wentworth to the business, progressing into the role of Head of Operations.

During this period, structured programme management and cost control systems were embedded across all projects. Subcontractor coordination processes were strengthened and internal delivery frameworks refined. By 2019, the group was operating as a scalable commercial contractor with defined governance, reporting, and execution systems — positioning the company for larger and more technically complex developments.

## **Increasing Structural & Multi-Residential Capability (2020–2023)**

Between 2020 and 2023, project scale and structural complexity increased significantly, marking a deliberate progression into multi-level and services-intensive developments. This period was defined by deeper structural coordination, more advanced sequencing, and the refinement of risk management systems required for basement and multi-storey construction.

## **The beginning of Betomi Pty Ltd**

In 2024, Rebecca Lance and Tom Wentworth became formal partners alongside Michael Lance. Betomi Pty Ltd was then established, consolidating leadership and governance while continuing under the established brand name.



# Milestone Projects

## **Bounce Noosa – A Defining Milestone**

A pivotal achievement during this period was the award-winning Bounce Noosa development in Noosaville, recognised by Master Builders in 2022. The project comprised a 25-room accommodation complex across four buildings, incorporating a basement-level carpark, hospitality facilities, and lift installation.

The basement structure was delivered under highly constrained conditions and at the time, it represented the first basement carpark constructed in Noosa Shire under such hydrostatic conditions.

## **Expanding Multi-Residential & Structural Portfolio**

Further projects reinforced increasing structural sophistication and multi-unit coordination capability.

The project delivered at Vivida Residences, Bottlebrush Ave in Noosa demonstrated structured trade sequencing and architecturally detailed multi-unit coordination.

At 2 Junction Drive, Coolum Beach, a 10-unit warehouse complex incorporating concrete tilt panels, mezzanine installations, and multi-tenant services strengthened structural sequencing capability.

Our next project at 24 Junction Drive further reinforced integration of structural concrete and steel systems, services coordination, and staged programme management across commercial warehouse development.

Collectively, these projects marked the group's evolution into a contractor capable of managing more complex structural frameworks and coordinated multi-tenant environments.



# BETOMI

# Business expansion

## Strategic Expansion into Gold Coast Multi-Residential (2024–2025)

In early 2025, the group commenced works on the Bounce Hotel and Hostel Project in Surfers Paradise, at the request of the client - LCI Partners. The engagement required immediate project stabilisation, comprehensive cost-to-complete assessment, subcontractor re-engagement, programme reassessment, and structured sequencing control, alongside active stakeholder coordination. This appointment formalised the integration of high-rise expertise within the business.

Matt Kent joined the team to lead Contract Administration and Estimation, bringing experience from recent local multi-residential developments including Onde Apartments Coolangatta (90 Units, 14 storeys, double basement), Sola Apartments Broadbeach (22 Units, 23 storeys, triple basement), Elevaire Palm Beach (40 Units, 9 storeys, double basement), and Burly Residences (101 Units, 25 storeys, triple basement). His contribution strengthens commercial governance, high-rise contract administration, and risk management capability.

Regan Brown joined the team as a Project Manager to support high-rise project delivery, contributing from his past experience across large-scale apartment developments including Rhodes Waterside (150 apartments), The Linc (176 apartments), Manly Peninsula (162 apartments), and The Arden (105 apartments). His background reinforces basement construction expertise, multi-storey structural sequencing, and high-density coordination capability.

Today, Betomi Construction operates as a structured commercial and multi-residential contractor across South East Queensland, combining technical capability, financial discipline, and proven delivery systems to support developer-led and institutional projects with confidence.



## Our Office Team

The Betomi brand, delivery history, and embedded systems remain central to operations.

The current leadership structure integrates established capability with embedded high-rise expertise



Michael Lance  
Director



Rebecca Lance  
Chief Administrative Officer



Tom Wentworth  
Head of Operations



Lisa Baumann  
Accounts Dept.

## Our Site Team

The Betomi brand, delivery history, and embedded systems remain central to operations.

The current leadership structure integrates established capability with embedded high-rise expertise



Regan Brown  
Project Manager



Matt Kent  
Contract Administrator  
& Estimator



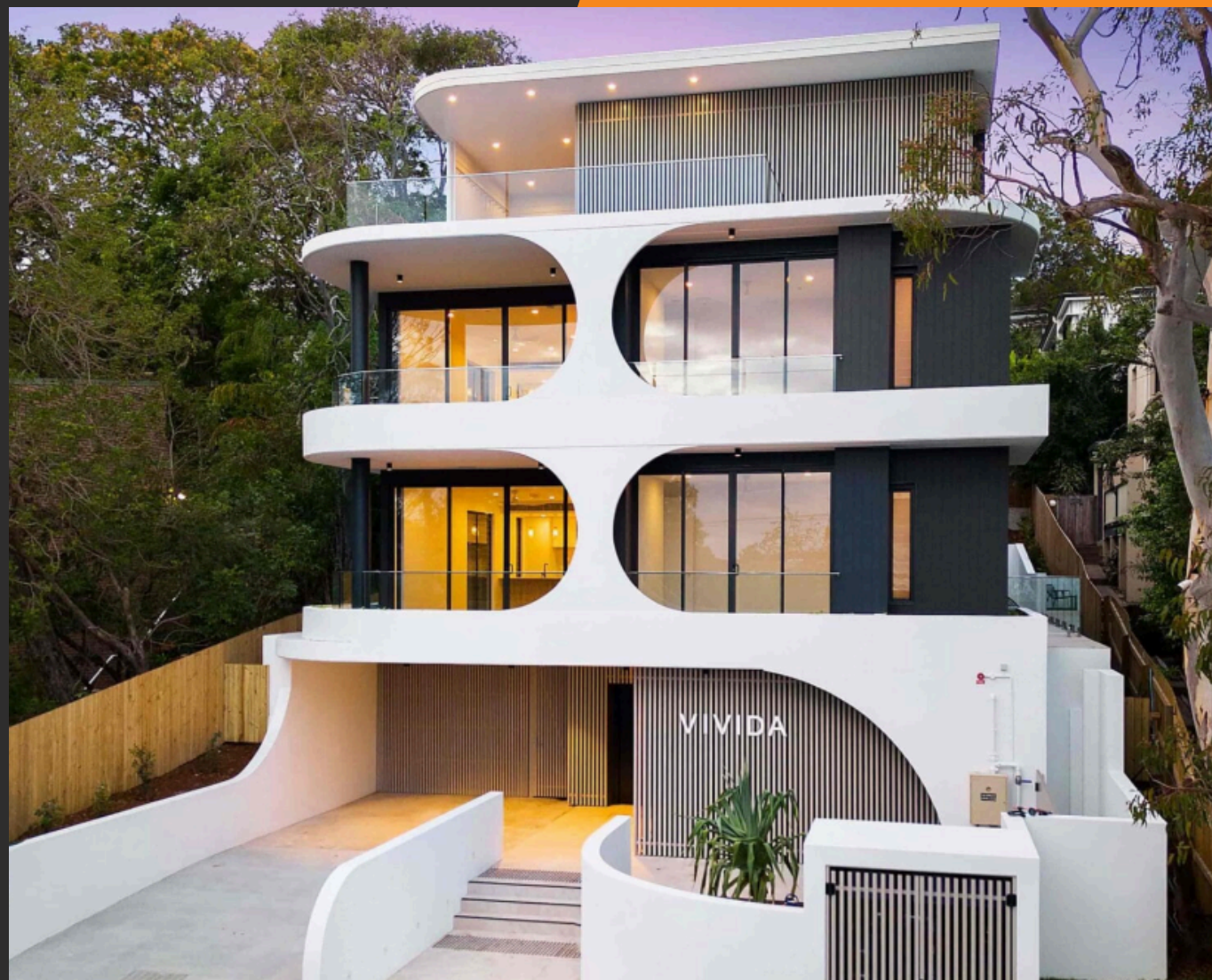
Adrian Hall  
Foreman - Gold Coast



Sam Martin  
Foreman - Sunshine Coast

# Our Portfolio

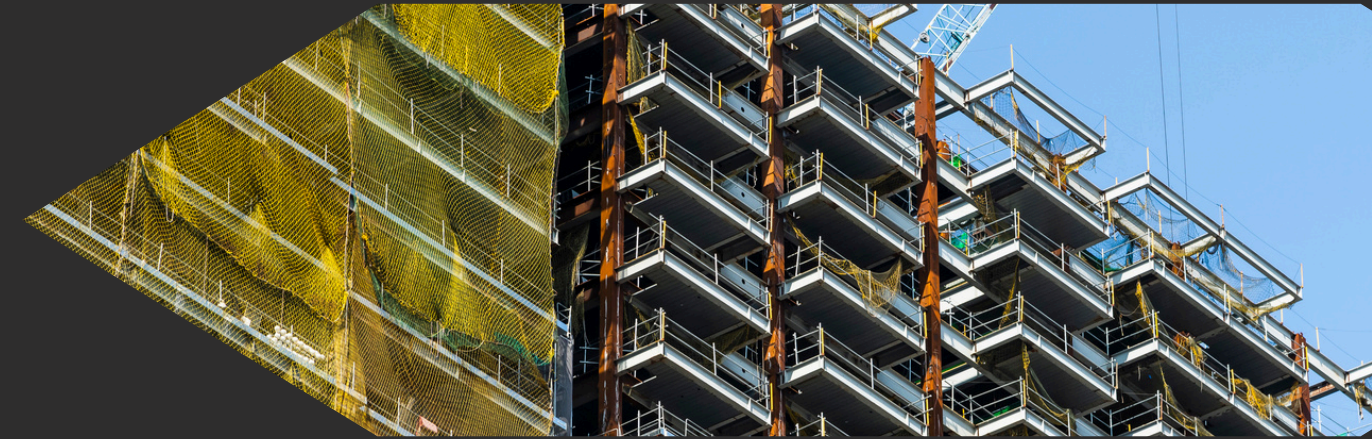
Our portfolio reflects a breadth of distinguished projects, shaped by a Gold Coast-based team bringing experience from more than 100 high-calibre developments across their collective careers. Featured here are a selection of some of our recent works



## ■ “Professional & Talented” - Rachel Smith – Novotel

Build4U completed the Lobby renovation at Novotel Sunshine Coast Resort in 2019. The Resort was on a strict timeframe and we found the Build4U team operationally efficient and very easy to get along with. The transformation of the Lobby and SOLA Bar is the focal point of our guest arrival and it has had a very positive impact on our guest experience.

# Testimonials



## ■ “Fast & Efficient” - Joel Laventure

From beginning to end, Mick and the team at Build 4U were fast, efficient, and very professional. They completed the fit-out work on time and delivered a very high-quality finish. Along the way, Mick always made himself available on the phone or in person. He managed the project proactively, and always in line with our needs and preferences. I would highly recommend Build 4U to anyone looking for a no-nonsense, professional approach to building.

## ■ “Best Customer Experience” - David Brinkley

From start to finish Mick and the team at Build 4 U were an absolute pleasure to deal with when they built our home which we designed. I have since recommended them to other friends and clients who have all had similar experiences. Would use this team again for sure.



# BETOMI

## Let's Stay in Touch

We look forward to the opportunity to partner with you and help bring your vision to life

→ [hello@betomi.au](mailto:hello@betomi.au)

→ [www.betomi.au](http://www.betomi.au)

→ 07 5391 4965

→ Our GC address: PO Box 8903, Bundall QLD 4217

